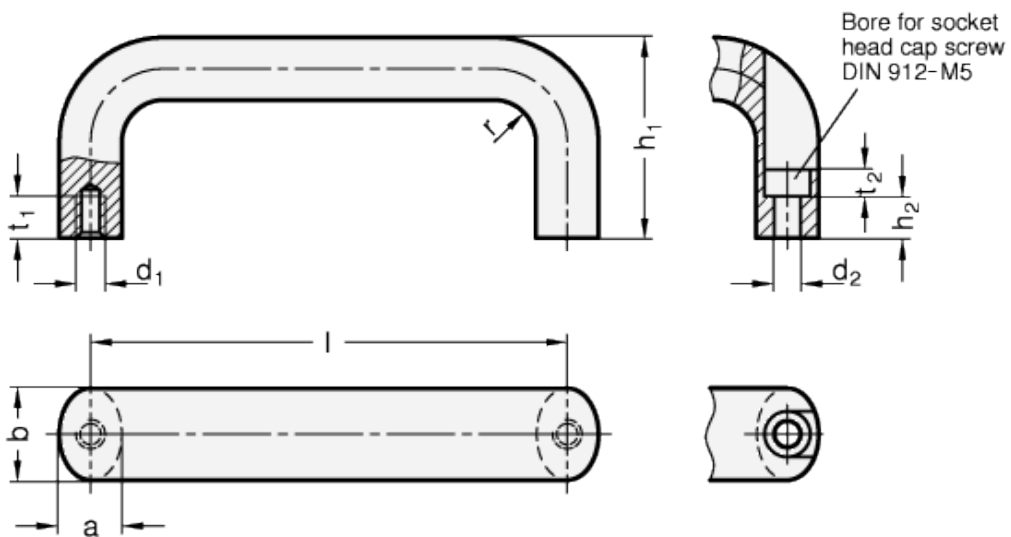


# GN 565.5

Handles



INOX  
Stainless Steel



## technical informations

### Specification

Stainless Steel

### Types

- Type A: Mounting from the back (threaded blind bore)
- Type B: Mounting from the operator's side

- Type A: AISI 304
- Type B: Fine die casting, AISI CF-8
- matt shot-blasted GS
- slip polished, shiny metallic (only type A) GP

*Special executions on request (For sufficient quantities)*

Different lengths.

## Features and applications

The special features of Stainless Steel-Cabinet „U“ handles GN 565.5 are their rigidity and ergonomic shaping.

Stainless Steel-Cabinet „U“ handles (Type A) are produced from profiled extrusions. The manufacturing process (bending) allows the production of special lengths in relatively small quantities

Standard Elements	Main dimensions								Mounting holes		Weight
	b	l	a	d <sub>1</sub>	d <sub>2</sub>	h <sub>1</sub>	h <sub>2</sub>	r	t <sub>1 min.</sub>	t <sub>2</sub>	g
GN 565.5-20-112-A-GS	20	112	13	M6	5.4	49	13.5	13	10	5.5	293
GN 565.5-20-112-A-GP	20	112	13	M6	5.4	49	13.5	13	10	5.5	-
GN 565.5-20-128-A-GS	20	128	13	M6	5.4	51	13.5	13	10	5.5	330
GN 565.5-20-128-A-GP	20	128	13	M6	5.4	51	13.5	13	10	5.5	-
GN 565.5-20-160-A-GS	20	160	13	M6	5.4	51	13.5	13	10	5.5	366
GN 565.5-20-160-A-GP	20	160	13	M6	5.4	51	13.5	13	10	5.5	-
GN 565.5-20-200-A-GS	20	200	13	M6	-	51	-	13	10	-	440
GN 565.5-20-200-A-GP	20	200	13	M6	-	51	-	13	10	-	-
GN 565.5-20-250-A-GS	20	250	13	M6	-	51	-	13	10	-	517
GN 565.5-20-300-A-GS	20	300	13	M6	-	51	-	13	10	-	597
GN 565.5-20-350-A-GS	20	350	13	M6	-	51	-	13	10	-	660
GN 565.5-20-400-A-GS	20	400	13	M6	-	51	-	13	10	-	737
GN 565.5-20-112-B-GS	20	112	13	M6	5.4	49	13.5	13	10	5.5	-
GN 565.5-20-128-B-GS	20	128	13	M6	5.4	51	13.5	13	10	5.5	-
GN 565.5-20-160-B-GS	20	160	13	M6	5.4	51	13.5	13	10	5.5	-



ELESA and GANTER models all rights reserved in accordance with the law. Always mention the source when reproducing our drawings.

STANDARD MACHINE ELEMENTS WORLDWIDE